



Geoscience Ireland | The collaborative network connecting Irish experts to commercial projects and project partners in over 50 countries.

Geoscience Ireland is a network of **36 companies** delivering technical expertise to clients in over 50 countries.

Geoscience Ireland is supported by **Geological Survey Ireland** and **Enterprise Ireland**.



Rialtas na hÉireann
Government of Ireland



Who We Are & What We Do

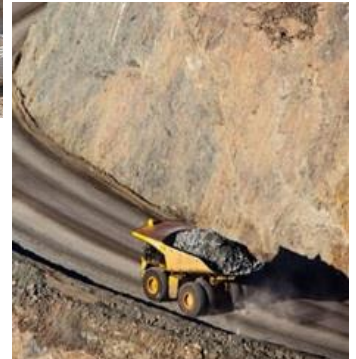
We are Expert Consultants in:

- Consulting Engineering
- Geotechnical Engineering
- Environmental
- Institutional Capacity Building
- Geophysical & Geochemical Surveying
- Project Management

We are Expert Contractors in:

- Drilling
- Lining
- Infrastructure
- Mining & Quarrying
- Building Materials

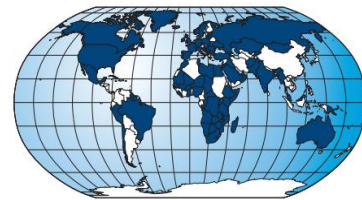
GI also has a **Panel of Individual Experts** across a range of disciplines available to its Member Companies.



Where do GI Members Operate?

GI Members operate in over 50 countries. Target markets are:

- Europe: the UK, the Nordics, the Balkan and Accession States
- Sub-Saharan Africa
- the Gulf Region



Who are GI's Clients?

GI Members' clients include:

- Sovereign States, Public Authorities and Semi-State Agencies
- Private Sector Companies
- International Financial Institutions and Multi-Lateral Agencies including the World Bank, UN Development Agencies, the EU, EIB and EBRD



Contacts | www.geoscience.ie

Sean Finlay | Director - Business Development; **E:** sean.finlay@gsi.ie | **Ph:** 00353 1 678 2842

Andrew Gaynor | Manager - Business Development; **E:** andrew.gaynor@gsi.ie | **Ph:** 00353 1 678 2673

Elizabeth Murphy | Market Advisor; **E:** elizabeth.murphy@gsi.ie | **Ph:** 00353 1 678 2687

Stephen Walsh | Market Advisor; **E:** stephen.walsh@gsi.ie | **Ph:** 00353 1 678 2808

@Geosciencelre

Geoscience Ireland

The Geoscience Ireland Network

AECOM (Ireland) | Provider of integrated design, build and management services including geo-environmental S/I design, risk assessments, remediation design, due diligence, water resource management, ecological surveys, and EIA. AECOM (Ireland) deliver projects in [China](#), [UK](#), [Australia](#), [India](#) & [South America](#)

APEX Geoservices | Geophysical survey company with experience in [Middle East](#), [Scandinavia](#), [Eastern Europe](#) & [Jamaica](#).

Arup (Ireland) | Geotechnical engineers, engineering geologists and hydrogeologists providing innovative ground engineering solutions to a broad client base. Arup has project experience in [Scandinavia](#), [India](#) & [North America](#).

AWN Consulting | Environmental specialists in hydrogeology, acoustics and air quality with experience in [Turkey](#), [the UK](#), [the Gulf](#), [Ukraine](#) & [Kazakhstan](#).

BRG | Integrated geological services including mapping, geophysical surveying, design and implementation of mineral exploration programmes in [Ireland](#), [Turkey](#), [the Balkans](#) & [North Africa](#).

ByrneLooby | Engineering services and project management consultancy with engineering expertise in geotechnical, civil, structural, water, energy and marine projects. BL's office network includes [the UK](#), [Saudi Arabia](#), [Doha](#) & [the UAE](#).

Compass Informatics | Specialists in information and location technologies and analytics. Services and solutions in transportation, planning, environment and resources. Systems for roads, transport, biosolids, agri and land management with experience in [Ireland](#), [UK](#), [South Africa](#) & [the USA](#).

Designer Group | MEP engineering solutions provider to commercial & industrial developments and has extensive international experience including large infrastructure projects in [Ghana](#), [Ethiopia](#) & [Kenya](#).

ERM (Ireland) | Global provider of ESAI, health, safety, risk, and sustainability services for infrastructure development and extractive industries. ERM (Ireland) delivers projects in [Serbia](#), [West Africa](#), [Ethiopia](#) and [Scandinavia](#).

Fehily Timoney & Company | Specialist environment, energy, data management, infrastructure, waste and planning consultancy. FTC has completed projects in the [UK](#), [Europe](#) and [the Middle East](#).

FLI Group | Lining and remediation specialists with experience in mining and waste management projects in [Ireland](#), [the UK](#), [France](#), [Canada](#), [New Caledonia](#), [Reunion Islands](#) & [the Gobi Desert](#).

Gavin & Doherty Geosolutions (GDG) | Provider of geotechnical engineering services to civil infrastructure projects, harbours/marinas, offshore oil/gas, wind farms, and commercial structures in [the UK](#), [France](#), [Nordics](#), & [Canada](#).

Geo Drilling Solutions | Provides design, supply and training for water well drilling, geothermal heating systems; horizontal directional drilling, pipe ramming, and auger boring; environmental and gas monitoring; installations for hydrocarbon boreholes; dewatering. Operations in [Ireland](#) & [UK](#).

Geological Survey Ireland (GSI) | The National Earth Science Organisation, and is responsible for providing geological information and advice. It's a division of the Department of Communications, Climate Action & Environment (DCCA).

IE Consulting | Specialists in the provision of water resource engineering, hydrology and flood risk assessment, groundwater assessment, contaminated land and environmental assessment in [Ireland](#) & [the UK](#)

IGSL | Provider of geotechnical S/I, testing (including pyrite and gypsum) and design to project in [Ireland](#) and [the UK](#)

Irish Drilling | A provider of mineral exploration drilling and geotechnical (onshore & offshore) services in [Ireland](#), [the UK](#) & [France](#).

Intersocial Consulting | Advisor to companies on land access and resettlement, social assessment, stakeholder engagement, community investment and CSR across [Africa](#), [South America](#) & [Asia](#).

J.B.Barry & Partners | Consulting engineers to civil, environmental, structural, transport and water projects. International experience includes projects in [Eastern Europe](#), [the Balkans](#), [Armenia](#), [Georgia](#), [Uganda](#), [Lesotho](#), [Zambia](#) & [Mozambique](#).

Lagan Asphalt Group | Diversified construction, manufacturing and civil engineering group, specialising in the construction and surfacing of highways and airfields; areas of innovation include special surfacing products development, polymer modification and design expertise. Lagan has completed projects in [the UK](#), [Eastern Europe](#) & [the Middle East](#).

Lisheen Technical & Mining Services (LTMS) | An integrated contract mining and technical provider of geological, engineering, planning, due diligence, mine closure, safety and training, and mine rescue training with project experience in [Greenland](#), [Russia](#), [India](#), [Canada](#), [Zambia](#), [Poland](#) & [Kazakhstan](#).

Meehan Drilling | Water drilling company providing domestic, commercial and agri water wells, and has expanded into energy drilling projects in [the UK](#)

Mincon Group | Manufactures and distributes a range of precision engineered hard-rock drilling tools for a variety of industries including Mining, Exploration, Waterwell, Geothermal, Construction, Horizontal Directional Drilling, Oil-Gas and Energy. Mincon has a worldwide presence with offices in [Ireland](#), [UK](#), [Sweden](#), [Poland](#), [USA](#), [Canada](#), [Australia](#), [South Africa](#), [Namibia](#), [Tanzania](#), [Senegal](#), [Ghana](#), [Chile](#) & [Peru](#).

Murphy Surveys | Provider of BIM, laser scanning, hydrographic and underground geophysical surveys for rail, road, river channels, pipelines, utilities and built environment projects in [Ireland](#) & [the UK](#)

Nicholas O'Dwyer | Consulting engineers in water, environmental, highway engineering and in civil & structural engineering. The firm has worked for international development agencies in [Africa](#), [the Caribbean](#) & [Asia](#).

Pavement Management Services | Specialists in testing, evaluating and managing surfaces for roads, airports and ports and has completed projects in the [UK](#), [U.S.A.](#), [Lithuania](#), [Kazakhstan](#), [Trinidad](#) & [Tanzania](#).

Priority Drilling | Priority Group | Experts in civil engineering, geotechnical engineering and drilling contractors. Priority Group comprises Priority Construction, and its sister companies Priority Drilling and Priority Geotechnical, which service clients in the [Ireland](#), [the UK](#) & [Western Europe](#).

PW Mining | Provides civil engineering, building construction and contract mining services to both public and private sector clients in [Ghana](#), [Sierra Leone](#), [Mali](#) and [Burkina Faso](#). Based in Accra, Ghana, PW execute projects for major clients in the gold mining, infrastructure and oil and gas sectors.

PW Nigeria | Contractors in developing roads, bridges and other civil infrastructure throughout [Nigeria](#). Clients include many Federal and State authorities and private clients.

QME | A hard rock tunnelling contractor specialising in contract mining services for the mining and quarrying industries in [Ireland](#) & [the UK](#).

Roadstone | Manufacturer and supplier of building materials for motorways, airports, rail, bridges, water supply and commercial and residential developments in [Ireland](#), [the UK](#) & [Northern Europe](#).

Rubicon Heritage Services | Archaeological firm specialising in managing the archaeological or cultural heritage risk associated with energy, water, transport and infrastructure developments. Servicing clients in [UK](#) & [Ireland](#)

SLR Consulting (Ireland) | Environmental solutions for minerals, energy and waste, specialising in sustainable development of resources and institutional strengthening, in [Europe](#), [Africa](#), [Australasia](#) & [Americas](#).

Tobin Consulting | A multi-disciplinary practice specialising in water and environmental services, waste management and infrastructure, mining and quarrying, with projects in [Ireland](#), [the UK](#) & [Poland](#).

Trench Control | Specialises in ground support equipment hire, sheet piling, anchoring, flood protection with offers expertise in the areas of deep and shallow foundation design, slope stability, soil nailing/anchoring/rock bolting, dewatering advice and soft ground engineering in [Ireland](#) & [the UK](#)

Verde Environmental Group | Specialists in remediation services for control and clean up of land contaminated by oil, chemicals or flooding. Verde is actively developing business in [Africa](#) through the UNEP and other agencies.